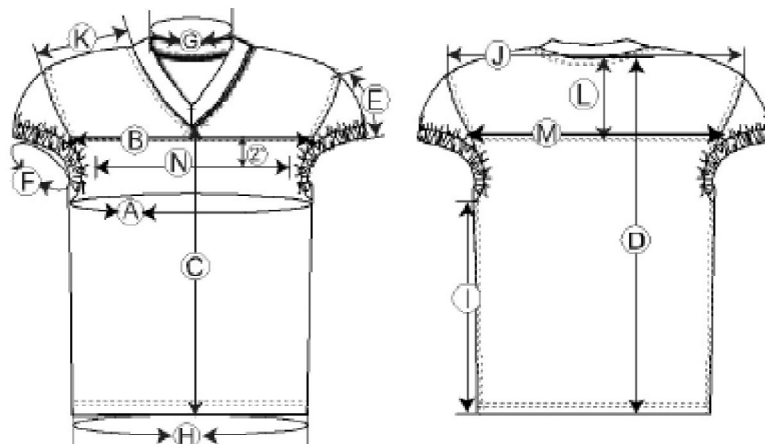




3.1- Dimension Image

3.2- Template (when applica



3.3- Points Of Measurement (POM)

|                      |      |      |     | XS     | S      | M      | L      | XL     |
|----------------------|------|------|-----|--------|--------|--------|--------|--------|
| Tolerances           | -    | +    | IPM | 22-24  | 25-27  | 28-30  | 31-33  | 34-36  |
| Chest                | 0.5  | 0.5  | A   | 24.500 | 27.500 | 30.500 | 33.500 | 36.500 |
| Across Chest         | 0.5  | 0.5  | B   | 11.250 | 12.125 | 13.000 | 13.875 | 14.750 |
| Center Front Length  | 0.5  | 0.5  | C   | 17.875 | 19.875 | 21.375 | 22.625 | 23.875 |
| Center Back Length   | 0.5  | 0.5  | D   | 22.625 | 24.750 | 26.375 | 27.750 | 29.125 |
| Sleeve Length        | 0.5  | 0.5  | E   | 5.250  | 5.375  | 5.500  | 5.625  | 5.625  |
| Sleeve Circumference | 0.5  | 0.5  | F   | 11.000 | 12.000 | 13.000 | 14.000 | 15.000 |
| Neck Circumference   | 0.5  | 0.5  | G   | 18.000 | 18.500 | 19.000 | 19.500 | 20.000 |
| Sweep Circumference  | 0.5  | 0.5  | H   | 25.000 | 28.000 | 31.000 | 34.000 | 37.000 |
| Side Seam            | 0.5  | 0.5  | I   | 12.375 | 14.125 | 15.375 | 16.375 | 17.375 |
| Across Shoulders     | 0.5  | 0.5  | J   | 16.250 | 17.000 | 17.750 | 18.500 | 19.250 |
| Shoulder Length      | 0.37 | 0.37 | K   | 5.125  | 5.375  | 5.750  | 6.125  | 6.500  |
| Yoke Depth           | 0.25 | 0.25 | L   | 4.250  | 4.375  | 4.500  | 4.625  | 4.750  |
| Yoke Width           | 0.5  | 0.5  | M   | 11.375 | 12.250 | 13.125 | 14.000 | 15.000 |
| F/B Lettering Width  | 0    | 0    | N   | 8.000  | 9.000  | 10.000 | 11.000 | 12.000 |